

OPERATING AND MAINTENANCE INSTRUCTIONS/
SPARE PARTS

EDITION 01/2017

**Serving the Gas Industry
Worldwide**

Honeywell

Contents

	page
1. General remarks	3
2. Safety notices	3
3. Special operating notices	4
4. Special maintenance notices	4
4.1 Switch gear	4
4.2 Main valve	4
4.3 Screw tightening torques	5
4.4 Lubricants	5
5. Spare parts	
5.1 Spare parts drawing	6
5.2 Spare parts list	7, 8
5.3 Spare parts drawing additional parts	9
5.4 Spare parts drawing accessories	10
5.5 Spare parts list additional parts	11
5.6 Spare parts list accessories	11
5.6 Parts for maintenance	12

3. Special maintenance notes

Opening the safety shut-off valve (SSV)

- For opening the SSV main valve push lever (53) into the corresponding hole in the disc (24), and turn.

Closing the safety shut-off valve (SAV) via manual release

- For closing the SSV pull the T-shaped lever (47) upward.

4. Special maintenance notes



Prior to disassembly all chambers carrying gas media must be depressurised.

4.1 Switch gear

4.1.1 Position of the retaining disc (34) for closed SSV

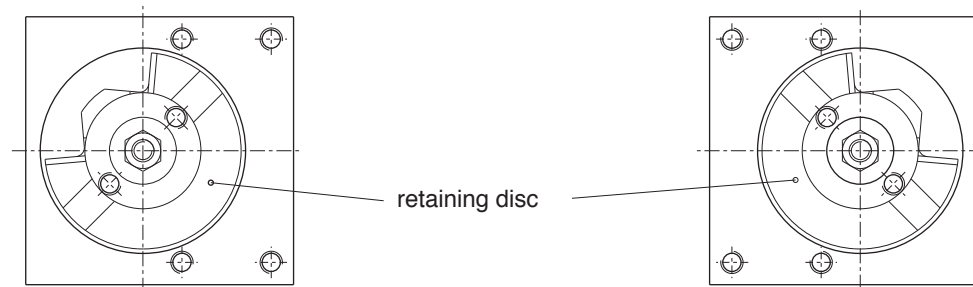


Bild 1 right-hand-side operation
(standard version)

Bild 2 left-hand-side operation

4.1.2 Mounting the switching rod (37)

When mounting the pre-assembled group consisting of switching rod (37) / piston (42) / manual release (46) in the retaining holes of the switch gear lid (39), please observe the position of the switching screw (48).

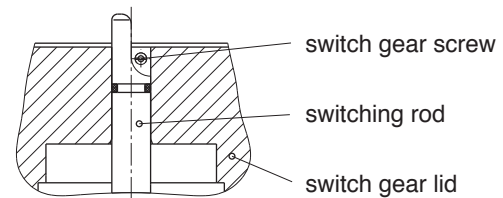


Bild 3 Einbaulage der Schaltstange

4.2 Valve flap

4.2.1 Exchange of the valve sealing (O-ring item no. 11) in the valve plate (12)

- close SSV (use manual release)
- remove lid (6)
- remove disc (24)
- loosen screws (51) to release closing springs (26) in the spring housing (25)

Attention: When loosening the screws (51) stick the lever (53) into the hole in the spring housing and hold tight to prevent the closing spring force from turning the housing whilst unscrewing.

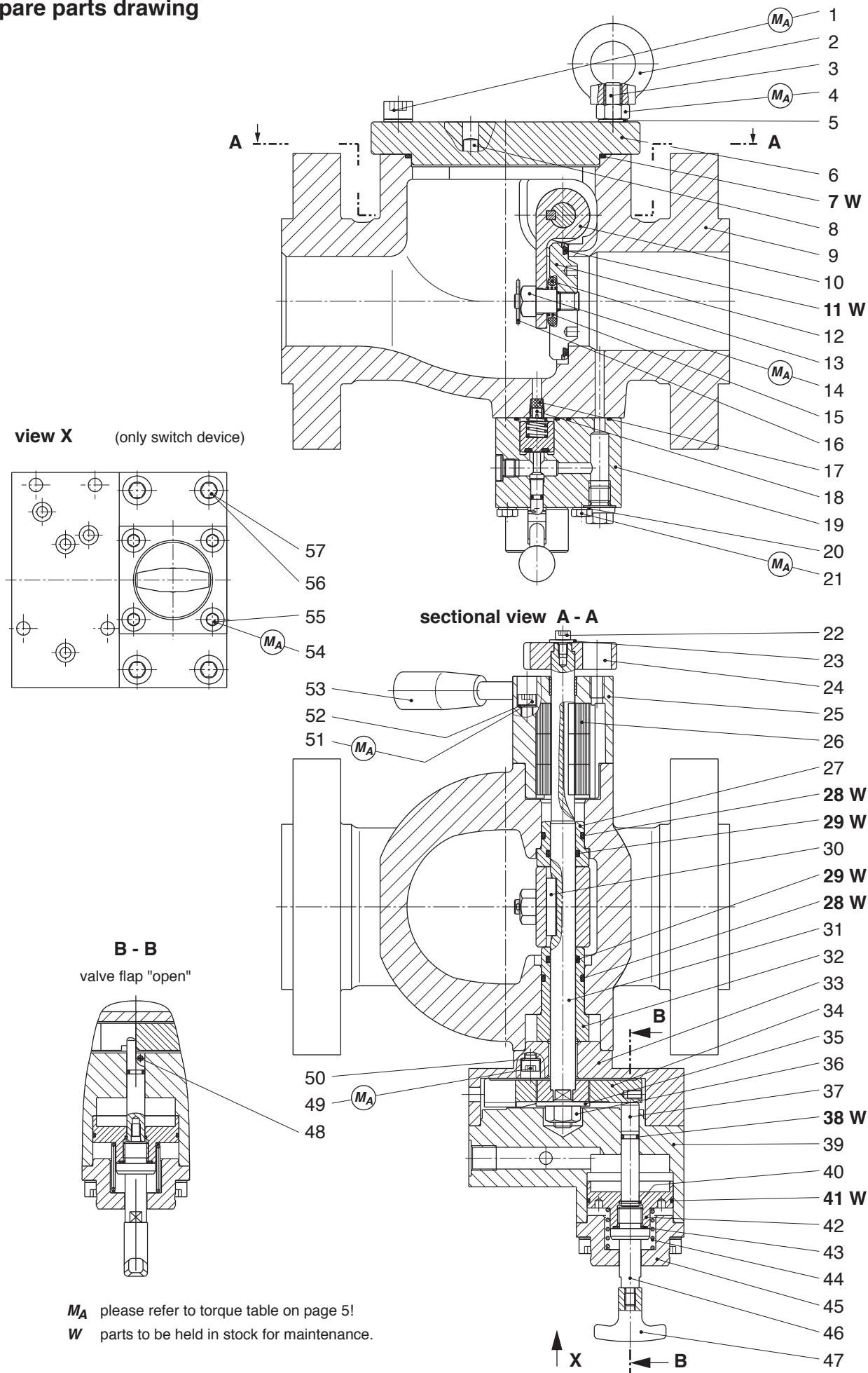
- swivel the valve flap (12) outward

Note

- When inserting a new greased o-ring (11) into the groove of the valve flap (12), first press the ring at 3 - 4 points equally spaced around its circumference into the groove. Then press the o-ring in completely.
- Prior to turning back the valve plate (12), pull T-shaped lever (47)

Hint: If the valve flap (12) has been separated from the valve flap lever (10), then tighten the locking nut (14) with the required torque and secure the nut again using the split pin (16).

5.1 Spare parts drawing



5.5 Spare parts list additional parts

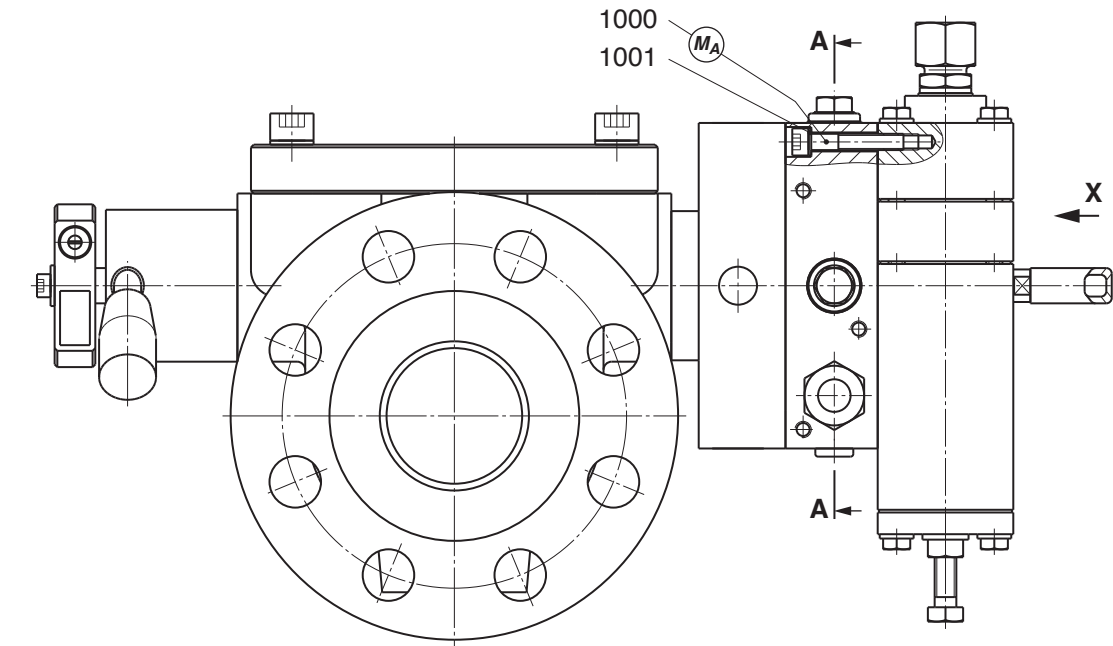
item no.	description	W	material	version with			
				HON 670 or HON 671 amt.	HON stock no.	HON 670 and HON 671 Anz.	HON stock no.
1000	cylindrical screw for K16/K17		St	4	10 562	8	10 562
1000	cylindrical screw for K18/K19		St	4	10 021 469	8	10 021 469
1001	safety washer		FSt	4	14 111	8	14 111
1002	o-ring	W	KG	3	20 225	6	20 225
1003	o-ring	W	KG	1	20 231	2	20 231
1004	washer		LM	1	10 025 103	2	10 025 103
1005	screw plug		St	2	26 175	3	26 175
1006	washer		LM	3	18 842	4	18 842
1007	dosing screw		NSt	1	10 014 016	1	10 014 016
1008	cap nut		St	1	30 804	1	30 804
1009	compression joint		St	1	30 904	1	30 904
1010	adapter		St	1	30 074	1	30 074
1011	washer		LM	1	18 572	2	18 572
1012	screw plug		St	1	10 547	2	10 547
1014	cylindrical screw		St			3	10 548
1015	safety washer		FSt			3	14 111
1016	base plate		LM			1	10 030 023
1017	o-ring	W	KG			2	20 310

5.6 Spare parts list accessories

item no.	description	amount	W	material	HON stock no.
1020	adapter for version without el. position indicator	2		K	26 550
1020	adapter for version with el. position indicator	1		K	26 550
	isolating switch, optional:				
1021	for 1 proximity switch (230 V AC)	1			24 402
1021	for 2 proximity switches (230 V AC)	1			24 403
1022	wire connecting box	1			24 099
1023	proximity switch	1			24 160
1024	threaded pin	1		St	12 049
1030	electromagnetic valve (24 V DC), at option:				
1030	SSV release at current supply	1			24 311
1030	SSV release at current failure	1			24 310
1031	adapter	1		St	30 023
1032	adapter	1		St	32 659
1033	adapter	1		St	32 685
1034	cap nut	1		St	30 804
1035	compression joint	1		St	30 904

5.3 Spare parts drawing additional parts

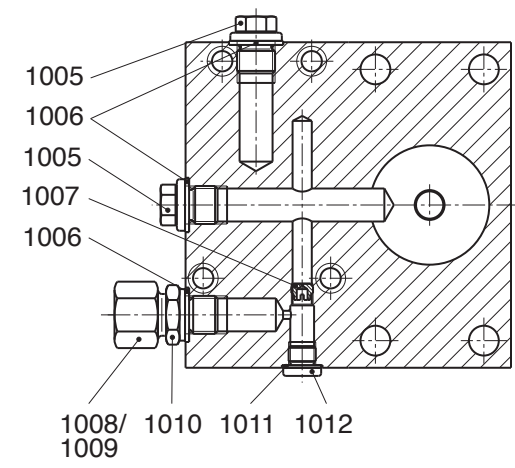
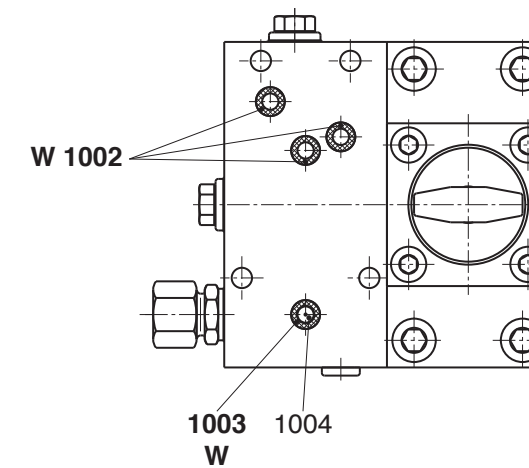
item no.	description	amt.	W	material	HON part no.			
					DN 25	DN 50	DN 80	DN 100
25	spring housing, complete	1		GLM/K	10 024 535	10 024 535	10 024 635	10 024 635
26	spiral band spring	3		NSt	10 022 336	10 022 336		
26	spiral band spring	4		NSt			10 022 436	10 022 436
27	guide bush	1		Ms	10 022 319	10 022 319	10 022 369	10 022 369
28	o-ring	2	W	KG	20 227	20 227	20 235	20 235
29	o-ring	2	W	KG	21 142	21 142	20 607	20 607
30	feather key	1		St	26 256	26 256	26 241	26 241
31	valve flap rod	1		NSt	10 030 012	10 030 012	10 030 013	10 030 014
32	guide bush	1		Ms	10 022 318	10 022 318	10 022 368	10 022 418
33	housing for switching device	1		LM	10 030 015	10 30 015	10 030 016	10 030 016
34	retaining disc	1		K/NSt	10 030 018	10 030 018	10 030 018	10 030 018
35	washer	1		St	14 127	14 127	14 127	14 127
36	safety nut	1		St	13 200	13 200	13 200	13 200
37	switching rod	1		NSt	10 030 019	10 030 019	10 030 019	10 030 019
38	o-ring	1	W	KG	20 664	20 664	20 664	20 664
39	lid for switching device	1		LM	10 030 017	10 030 017	10 030 017	10 030 017
40	circlip ring	1		FSt	19 109	19 109	19 109	19 109
41	o-ring	1	W	KG	20 293	20 293	20 293	20 293
42	piston	1		Bz	10 030 020	10 030 020	10 030 020	10 030 020
43	o-ring	1		KG	20 333	20 333	20 333	20 333
44	spring	1		NFSt	100 019	100 019	100 019	100 019
45	spring lid	1		LM	10 030 022	10 030 022	10 030 022	10 030 022
46	rod for manual release	1		NSt	10 030 021	10 030 021	10 030 021	10 030 021
47	T-shaped grip	1		K	100 021	100 021	100 021	100 021
48	screw	1		St	100 018	100 018	100 018	100 018
49	cylindrical screw	4		St	8 177	8 177	10 551	10 551
50	safety washer	4		FSt	14 111	14 111	14 112	14 112
51	cylindrical screw	4		St	10 549	10 549	10 428	10 428
52	safety washer	4		FSt	14 111	14 111	14 112	14 112
53	grip rod, complete	1		NSt/K	10 024 536	10 024 536	10 024 636	10 024 636
54	cylindrical screw	4		St	10 551	10 551	10 551	10 551
55	safety washer	4		FSt	14 112	14 112	14 112	14 112
56	cylindrical screw	4		St	10 642	10 642	10 642	10 642
57	safety washer	4		FSt	14 113	14 113	14 113	14 113



version with actuator unit HON 670 or HON 671

view X (only switching device)

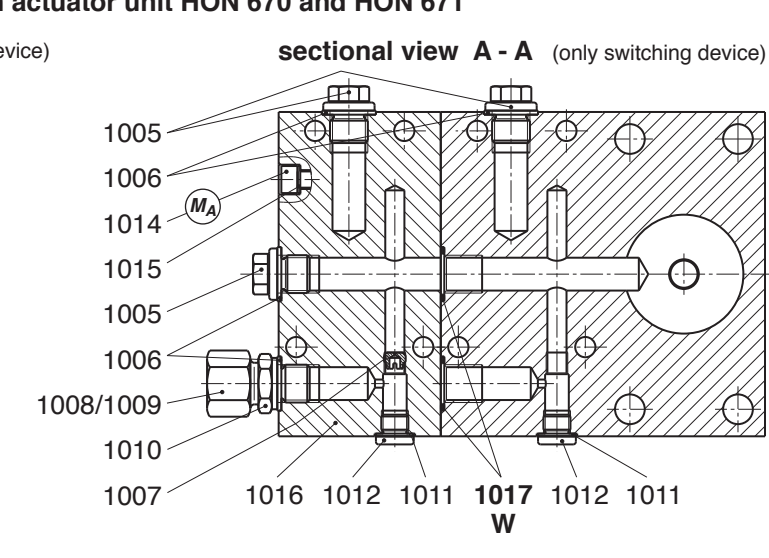
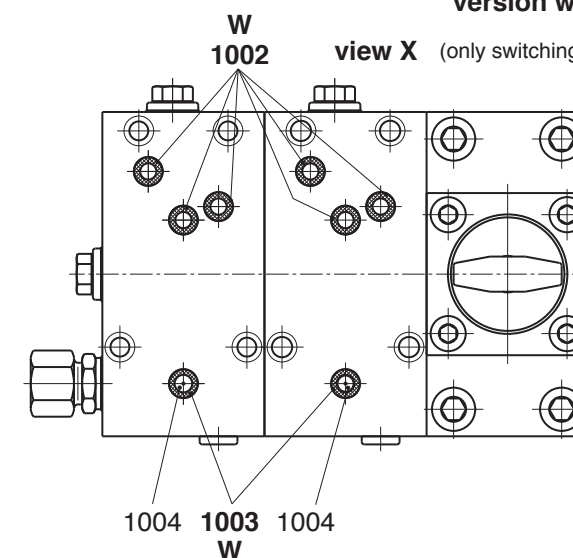
sectional view A - A (only switching device)



version with actuator unit HON 670 and HON 671

view X (only switching device)

sectional view A - A (only switching device)

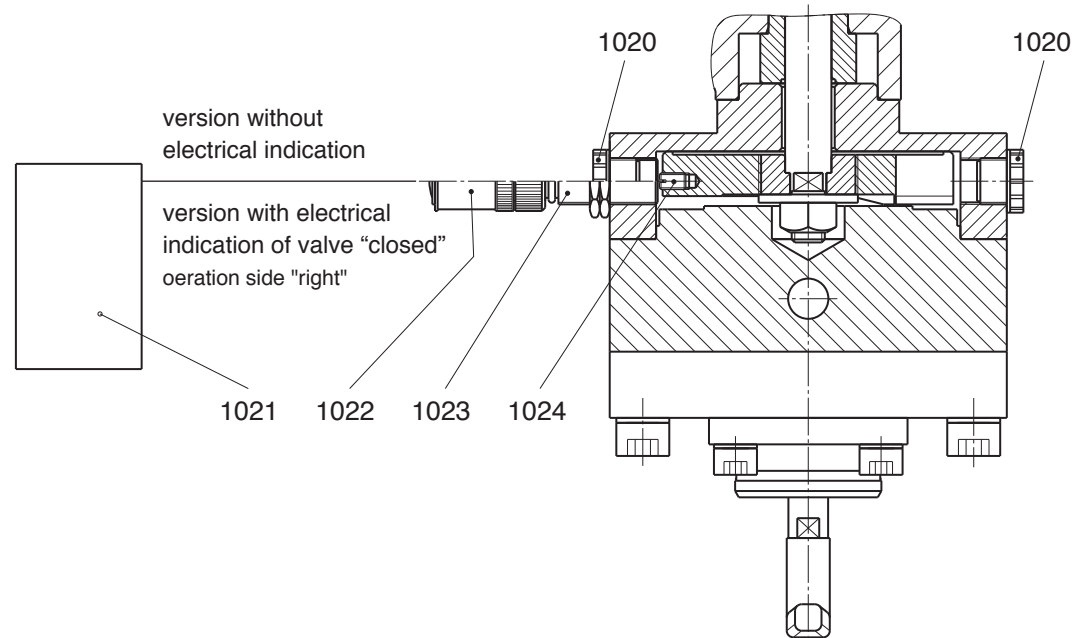


MA please refer to the torque table on page 5!

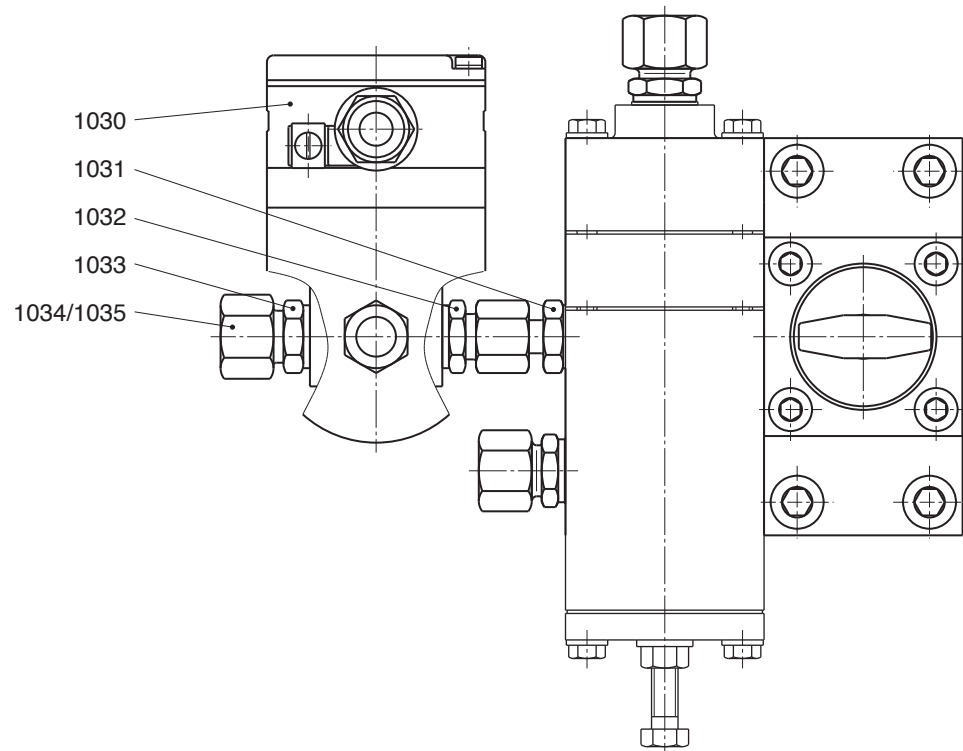
W parts are to be held in stock for maintenance.

5.4 Spare parts drawing accessories

version with or without electrical indication of valve plate position



version with electromagnetic release



5.2. Spare parts list

item no.	description	amt.	W	material	HON stock no.			
					DN 25	DN 50	DN 80	DN 100
1	cylindrical screw	5		St	10 551			
1	cylindrical screw	9		St		10 400		
1	cylindrical screw	11		St			10 563	
1	cylindrical screw	15		St				10 556
2	ring nut	1		St	13 129	13 130	13 137	13 137
3	threaded pin	1		St	12 382	12 043	100 118	100 119
4	hexagonal nut	1		St	5 559	5 692	13 120	13 120
5	safety washer	6		FSt	14 112			
5	safety washer	10		FSt		14 113		
5	safety washer	12		FSt			14 114	
5	safety washer	16		FSt				14 114
6	lid	1		St	10 022 279	10 022 329	10 022 379	10 022 429
7	o-ring	1	W	KG	21 141	20 248	20 250	20 457
8	dowel	1		St	17 270	17 270	17 200	17 200
9	body, at option:							
9	PN 25 and PN 40	1		GS	10 022 250	10 022 300	10 022 350	10 022 400
9	ANSI 300 RF	1		GS	10 022 253	10 022 303	10 022 353	10 022 403
9	ANSI 300 RJ	1		GS	10 022 254	10 022 304	10 022 354	10 022 404
9	ANSI 600 RF	1		GS	10 022 255	10 022 305	10 022 355	10 022 405
9	ANSI 600 RJ	1		GS	10 022 256	10 022 306	10 022 356	10 022 406
10	valve flap lever	1		St	10 022 263	10 022 313	10 022 371	10 022 421
11	o-ring	1	W	KG	20 236	20 458	20 330	20 313
12	valve flap, complete	1		Ms/NSt/St	10 022 262	10 022 312	10 022 357	10 022 407
13	o-ring	1		KG	20 282	20 154	21 224	21 224
14	safety nut	1		St	13 199	13 200	13 202	13 202
15	spring	1		FSt	10 018 394	10 018 394	10 001 262	10 001 262
16	dowel	1		St	15 000	15 000	15 005	15 005
17	metal filter insert	1		St	100 017	100 017	100 017	100 017
18	screw	1		NSt	10 030 024	10 030 024	10 030 024	10 030 024
19	push-button valve HON 910a	1			10 030 030	10 030 030	10 030 030	10 030 030
20	safety washer	4		FSt	14 111	14 111	14 111	14 111
21	hexagonal nut	4		St	10 181	10 181	10 181	10 181
22	cylindrical screw	1		St	10 618	10 618	8 177	8 177
23	washer	1		St	14 082	14 082	14 137	14 137
24	disc, complete	1		LM/St	10 022 348	10 022 348	10 022 448	10 022 448

W Parts to be held in stock for maintenance

Materials key

St ... steel	LM ... light alloy	SSt ... foam
NSt ... stainless steel	Ms ... brass	K ... plastic
FSt ... spring steel	Cu ... copper	KG ... rubbery plastic
NFSt ... stainless spring steel	Bz ... bronze	KGFP... rubbery plastic with special coating
GS ... steel cast	GLM ... light alloy cast	FPM ... rubbery plastic material
GGG ... iron cast with spheroidal graphite	GMS ... brass cast	FP ... special plastic material
GZn ... zinc cast	AIBz ... aluminium bronze	PGL ... plexiglass
GBz ... bronze cast		

5.7 Parts for maintenance

item no.	description	Anzahl	Teile - Nummer			
			DN 25	DN 50	DN 80	DN 100
7	o-ring	1	21 141	20 248	20 250	20 457
11	o-ring	1	20 236	20 458	20 330	20 313
28	o-ring	2	20 227	20 227	20 235	20 235
29	o-ring	2	21 142	21 142	20 607	20 607
38	o-ring	1	20 664	20 664	20 664	20 664
41	o-ring	1	20 293	20 293	20 293	20 293

item no.	description	amt.	version with	
			HON 670 or HON 671 HON stock no.	HON 670 and HON 671 HON stock no.
1002	o-ring	3	20 225	6 20 225
1003	o-ring	1	20 231	2 20 231
1017	o-ring			2 20 310

Closing springs (26)

- The spring housing (25) contains 2 moulded receiving grooves for the closing springs. The grooves are required for the different mounting of closing springs for "right-hand-side operation" or "left-hand side operation" designs.
- When inserting the closing springs, first place them into the spring housing (25). Note the correct orientation of the springs as in figures 4 and 5.
- The pre-tension of the closing springs is correct when all 4 fastening screws (51) can be fitted to the housing (approx. half a turn of the spring housing). The valve flap must be in the closed position.

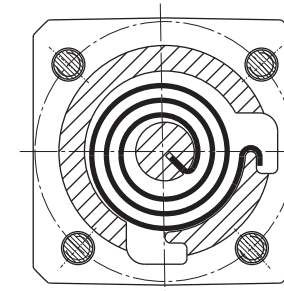


figure 4 Orientation of closing springs for "right-hand" operation (standard design)

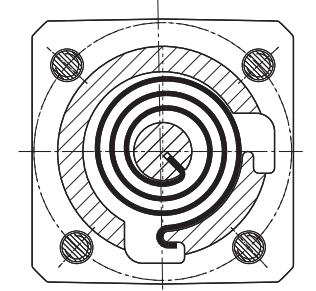


figure 5 Orientation of closing springs for "left-hand" operation

4.3 Screw tightening torques M_A

DN	tightening torques (M_A in Nm)							
	screw (item no.)							
	1 and 4	14	21	49	51	54	1000	1014
25	20	8	8	8	8	20	8	8
50	40	12	8	8	8	20	8	8
80	75	40	8	20	20	20	8	8
100	75	40	8	20	20	20	8	8

4.4 Lubricants

components	lubricants	HON part no.
all O rings, sliding guides, sliding faces and switch elements	silicon grease	00 027 081 (tube 0.1 kg)
all fastening screws and pipe connections	assembly grease	00 028 267

1. General remarks

Every person engaged with installation, supervision, or maintenance of the safety shut-off valve (SSV) HON 711 S2 is requested to read the following leaflets and brochures beforehand:

- **Technical Description 711.02** - contains technical data, measurements, and describes function and design.
- **General Operating Instructions for Gas Pressure Regulators and Safety Devices** - this Honeywell brochure describes installation and operation, and includes general hints on fault finding and repair.
- **Operation and Maintenance, Spare Parts 711.22** - contains further details on installation and operation of the safety shut-off valve HON 711 S2. Maintenance instructions and the spare part drawings and -lists of the main valve are also included.
- The related **functional elements** are described in separate "Operation and Maintenance, Spare Parts"-leaflets:

SSV actuator type	K 16, K 17, K 18, K 19	HON leaflet 670.20
push-button valve	HON 910a	HON leaflet 910.20

Additionally, the relevant national rules and laws have to be observed (In Germany please refer to the DVGW worksheets G 600, G 459/II, G 491 und G 495).

The frequency of periodical maintenance of the safety shut-off valve HON 711 S2 should be determined according to the prevailing conditions and the type and composition of the gaseous medium. Therefore, no fixed maintenance intervals can be prescribed. For Germany: At the beginning we recommend to use the maintenance intervals stated in the DVGW worksheet G 495. Then individual maintenance intervals should be determined for every station.




For maintenance all parts are to be cleaned and subjected to a thorough visual inspection. A visual inspection should also occur when the course of operation or functional tests have shown lack of regulating accuracy.

Particular care should be given to the checking of sealings and diaphragms, as well as carrying and moving parts. Damaged parts should be replaced by new ones. The item numbers referred to in the maintenance instructions are identical with those of spare parts drawings and spare parts lists.

We recommend to keep all parts that are specially marked "**W**" in the spare parts lists in stock for prompt maintenance availability.

1.1 Safety symbols

Safety symbols include the following **key words** in these operating instructions

symbols	explanation
	risk of human injury
	risk of damaging equipment or environment
	additional information or requirements

For More Information

To learn more about Honeywell's
Advanced Gas Solutions, visit
www.honeywellprocess.com or contact
your Honeywell account manager

GERMANY**Honeywell Process Solutions**

Honeywell Gas Technologies GmbH

Osterholzstrasse 45

34123 Kassel, Germany

Tel: +49 (0)561 5007-0

Fax: +49 (0)561 5007-107

HON 711.22
2017-01

© 2017 Honeywell International Inc.

The Honeywell logo is displayed in a bold, red, sans-serif font.