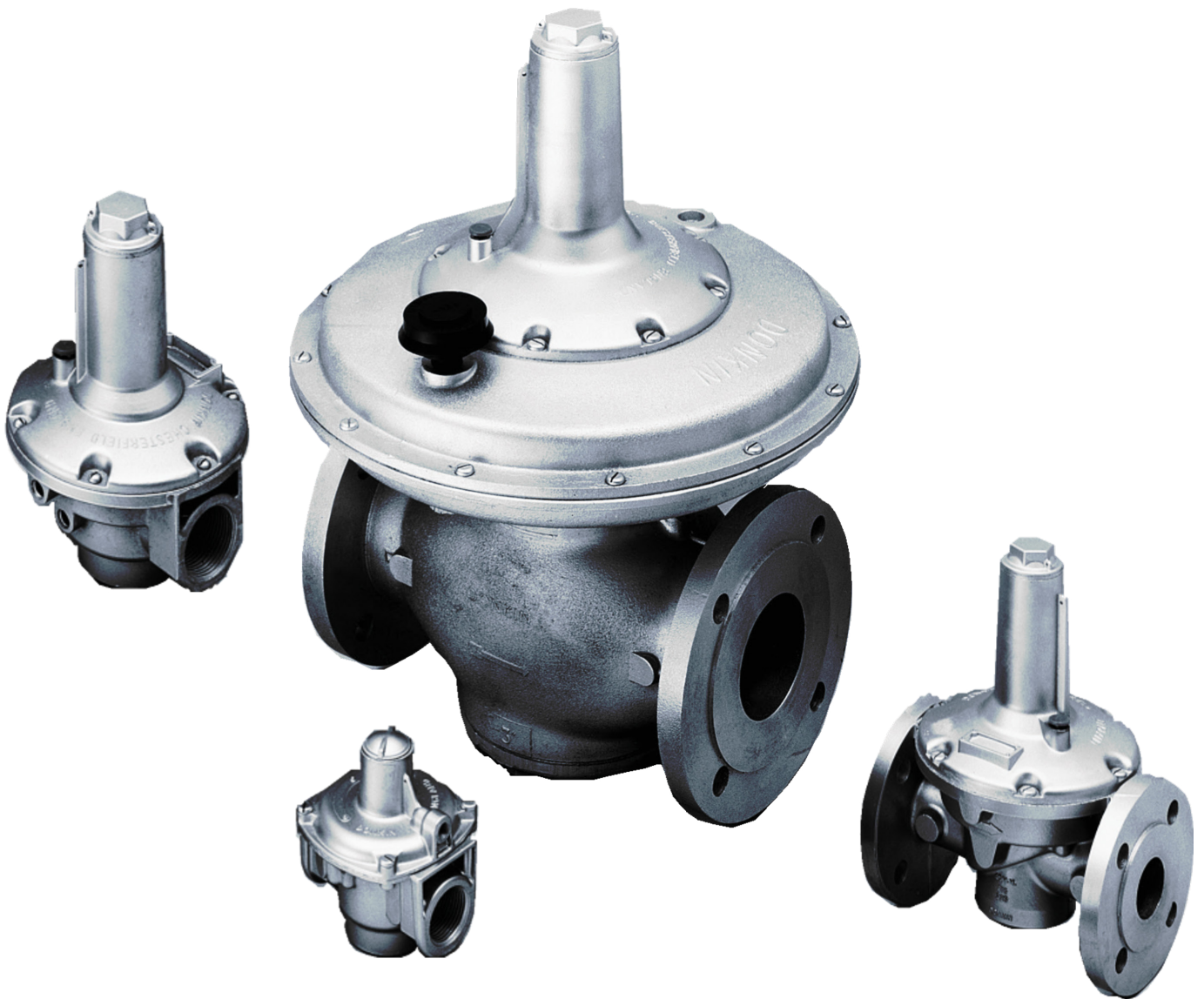


SERVING THE GAS INDUSTRY WORLDWIDE

Gas Pressure Regulator HON 226

Product Information



Honeywell

INTRODUCTION, APPLICATION, FEATURES, TECHNICAL DATA

Introduction

- The HON 226 is a range of Low Pressure, Direct Acting, diaphragm operated, spring loaded regulators.
- Use with confidence on natural and manufactured gases of non-aggressive nature, including Nitrogen, Carbon Dioxide, Propane, and Butane etc.

Application

- Designed primarily for control of fuel gas feeds to industrial burners, heater units, boilers and other items of equipment where an accurate, safe and reliable controlled pressure supply is required.

Features

- Quick Response to Rapid Load Changes
- Installation at any angle
- Wide Operational Pressure Range
- Complies generally with specification BG/PRS 33 & EN88

FLANGED
DN 50
DN 100
DN 150
PN16: BS EN 1092-2: 1997

SERVICE CONDITIONS			
SIZE	MAX. INLET	MAX. INLET PRESSURE	OUTLET PRESSURE RANGE
DN 50	226 Mk2	500 mbarg	3.7 to 80 mbarg
DN 100	226 Mk2		7.5 to 150 mbarg
DN 150	226 Mk2		12.5 to 150 mbarg

Temperature Range: -20°C to +60°C

Options

- Available with or without Inlet & Outlet Pressure Test Points (sizes 2" and above)
- Internally or Externally Impulsed (sizes 2" and above)
- Fitting of Lead Wire Seal

Installation

- Any orientation, but moisture or debris must not ingress the vent hole.

SPRING SELECTION

SPRING SELECTION				
OUTLET PRESSURE RANGE (IN MBARG)	SPRING COLOUR	SPRING NUMBER		
		DN 50 FL	DN 100 FL	DN 100 FL
3.7 to 7.5	Red	292	-	-
7.5 to 15	Blue	293	-	-
	White/Gold	-	409	-
12.5 to 25	Self	283	-	-
	Black/Gold	-	410	-
	Lt. Blue/Dk. Green	-	-	419
23 to 37	Green	284	-	-
	Yellow/Gold	-	412	-
	Yellow/Lt. Blue	-	-	420
35 to 60	Lt. Green/Brown	-	-	430
35 to 80	Yellow	285	-	-
	Brown/Gold	-	414	-
55 to 112	Lt. Green/Grey	-	-	431
70 to 150	Grey/Maroon	-	407	-
100 to 150	Self	-	-	617

Spring Data based on Spring Housing vertically upwards.

CAPACITIES

SET POINT: 12.5 MBARG

INLET PRESSURE MBARG DROOP 10%			Capacities in sm ³ /hr (SG 0.6)						
			25	50	75	100	150	200	350
DN 50	226 MK2	FL	80	128	260	310	350	450	485
DN 100	226 MK2	FL	390	390	500	650	780	960	1000
DN 150	226 MK2	FL	780	780	1000	1300	1560	1920	2000

SET POINT: 20 MBARG

INLET PRESSURE MBARG DROOP 10%			Capacities in sm ³ /hr (SG 0.6)						
			25	50	75	100	150	200	350
DN 50	226 MK2	FL	56	126	160	218	260	375	635
DN 100	226 MK2	FL	435	580	700	790	940	1050	1250
DN 150	226 MK2	FL	780	1160	1400	1580	1830	2050	2470

SET POINT: 30 MBARG

INLET PRESSURE MBARG DROOP 10%			Capacities in sm ³ /hr (SG 0.6)						
			25	50	75	100	150	200	350
DN 50	226 MK2	FL		126	178	210	355	440	625
DN 100	226 MK2	FL		610	760	930	1100	1250	1450
DN 150	226 MK2	FL		1220	1520	1850	2140	2430	2850

SET POINT: 45 MBARG

INLET PRESSURE MBARG DROOP 10%			Capacities in sm ³ /hr (SG 0.6)						
			25	50	75	100	150	200	350
DN 50	226 MK2	FL		80	97	159	226	375	580
DN 100	226 MK2	FL		440	730	900	1150	1350	1750
DN 150	226 MK2	FL		870	1440	1800	2220	2700	3500

SET POINT: 50 MBARG

INLET PRESSURE MBARG DROOP 10%			Capacities in sm ³ /hr (SG 0.6)						
			25	50	75	100	150	200	350
DN 50	226 MK2	FL			114	178	226	380	600
DN 100	226 MK2	FL			720	950	1200	1400	1800
DN 150	226 MK2	FL			1440	1900	2350	2680	3600

SET POINT: 60 MBARG

INLET PRESSURE MBARG DROOP 10%			Capacities in sm ³ /hr (SG 0.6)						
			25	50	75	100	150	200	350
DN 50	226 MK2	FL			126	192	283	400	620
DN 100	226 MK2	FL			640	860	1050	1200	1350
DN 150	226 MK2	FL			1280	1700	2070	2270	2650

CAPACITIES AND CORRECTION FACTORS

SET POINT: 70 MBARG									
			Capacities in sm ³ /hr (SG 0.6)						
INLET PRESSURE MBARG DROOP 10%			25	50	75	100	150	200	350
DN 50	226 MK2	FL			97	170	270	425	630
DN 100	226 MK2	FL			600	850	1100	1350	1450
DN 150	226 MK2	FL			1200	1700	2060	2640	2850

SET POINT: 100 & 150 MBARG									
			Capacities in sm ³ /hr (SG 0.6)						
			100 MBARG			150 MBARG			
INLET PRESSURE MBARG DROOP 10%			150	200	350	200	350		
DN 100	226 MK2	FL	1050	1150	1750	1250	1800		
DN 150	226 MK2	FL	2040	2280	3500	2450	3600		

Correction Factors

The capacities given in the above tables are calculated in terms of natural gas of SG 0.6. To find the equivalent capacities of other gases, multiply the figures given by the appropriate correction factor listed below.

TYPE OF GAS	SPECIFIC GRAVITY	CORRECTION FACTOR
Air	1.0	0.77
Propane	1.53	0.63
Propane/Air (1350 BthU)	1.2	0.71
Butane	2.0	0.55
Nitrogen	0.97	0.79

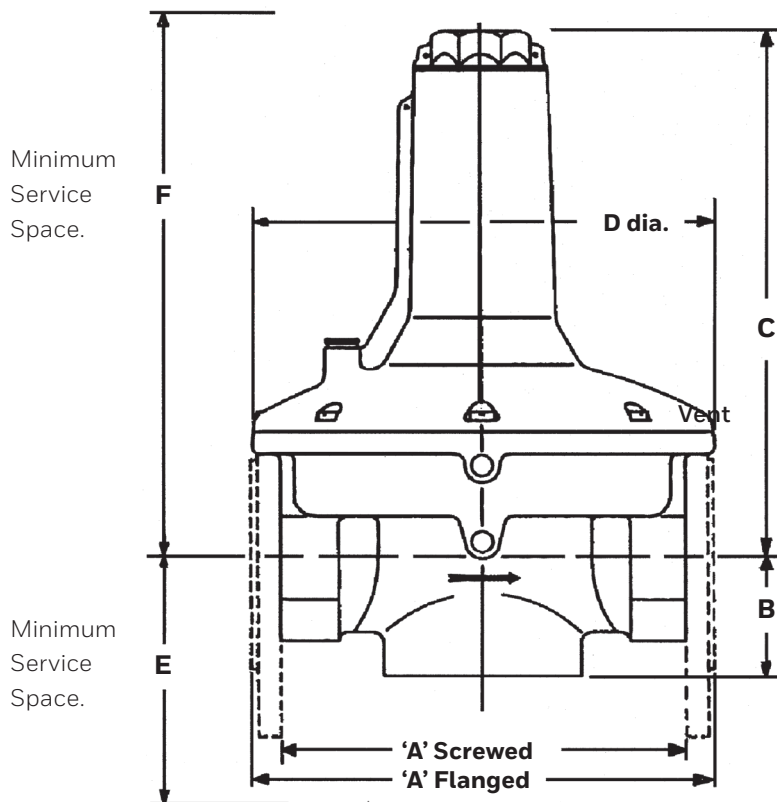
For all other Gases, multiply by the following correction factor:

$$\sqrt{\frac{0.6}{\text{SG of Gas handled}}}$$

MATERIALS OF CONSTRUCTION

REGULATOR SIZE	20 & 25MM SCREWED	DN 50 FLANGED	DN 100 & DN 150 FLANGED
	226K, 226R	226 MK2	226 MK2
Body	Aluminium: BS 1490 LM24	Aluminium: BS 1490 LM24	Ductile Iron: BS EN 1563 Grade: EN-GJS-400-18
Diaphragm Casing	Aluminium: BS 1490 LM24	Aluminium: BS 1490 LM24	Aluminium: BS 1490 LM6
Top Cap	Aluminium: BS 4300 2011TD	Zinc Die Cast: BS 1004A	Polypropylene
Bottom Plug/ Cover	Aluminium: BS 4300 2011TD	Aluminium: BS 1490 LM24	Ductil Iron:BS 1563 GR EN-GJS-400-18
Main Diaphragm	Nitrile	Nitrile	Nitrile
Balancing Diaphragm	Nitrile	Nitrile	Reinforced Nitrile
Main Diaphragm Plates	Carbon Steel: BS 4360 GR 43A Zinc Plated BS1706	Mild Steel bonded into Diaphragm	Plated Mild Steel
Spindle	Carbon Steel	Mild Steel with Protective Coating	Mild Steel with Protective Coating
Valve Seat	Nitrile	Nitrile	Nitrile
Spring	Carbon Steel	Carbon Steel	Carbon Steel
Spring Adjuster	Acetal Hostaform: C32021	Nylon 11	Cast Iron: BS 1561 GR EN-GJI-250
Distance Piece	Acetal Hostaform: C32021	Nylon 11	ABS
Impulse Tube	Acetal Hostaform: C32021	Nylon 11	Nylon 11
'O' Rings	Nitrile	Nitrile	Nitrile
Breather Valve	-	-	Polypropylene
Vent Cap	Polypropylene	Polypropylene	

DIMENSIONS & WEIGHTS



DIMENSIONS & WEIGHTS									
SIZE	TYPE	A	B	C	D	E	F	WT. KG'S	
20mm	SC	22&K	103	35	90	108	80	140	0.66
25mm	SC	226R	103	35	90	108	80	140	0.60
DN 50	FL	226 Mk2	210	58	261	213	110	420	5.0
DN 100	FL	226 Mk2	369	134	620	451	310	970	63.5
DN 150	FL	226 Mk2	473	194	830	559	435	1270	114.7

All Dimensions in mm, SC = Screwed, FL = Flanged

OTHER PRODUCTS IN THE HON 226 RANGE

RELIEF VALVES - HON 226R, VR & HVR			
SIZE	MODEL	MAX. INLET PRESSURE	RELIEF PRESSURE RANGE
1"	226R - Mk4	350 mbarg	15 to 300 mbarg
	226VR - Mk3	7 barg & 25 barg version available	25 to 550 mbarg
	226HVR - Mk3		0.5 to 3.5 barg

PILOTS - HON 226K, HK			
SIZE	MODEL	MAX. INLET PRESSURE	RELIEF PRESSURE RANGE
3/4"	226K	550 mbarg	7.5 to 120 mbarg
	226HK	550 mbarg	110 to 350 mbarg

PROFILING PILOT			
SIZE	MODEL	MAX. INLET PRESSURE	RELIEF PRESSURE RANGE
3/4" & 1"	226DPP	350 mbarg	17 to 55 mbarg

For more information

To learn more about Honeywell's
Advanced Gas Solutions, visit
www.honeywellprocess.com or
contact your Honeywell account manager.

Honeywell Process Solutions

Honeywell Bryan Donkin Gas Technologies
Ltd. Enterprise Drive, Holmewood
Chesterfield S42 5UZ, England
Tel: +44 (0)1246 501-501
Fax: +44 (0)1246 501-500
www.honeywellprocess.com

All contents are subject to copyright, with
the possible exception of information that
is universal and/or public domain.

Honeywell policy is one of continuous
improvement and development.

The company reserves the right to change, withdraw
and introduce improved designs without notice.

DS-22-01-EN | 01/22
© 2022 Honeywell International Inc.

**THE
FUTURE
IS
WHAT
WE
MAKE IT**

Honeywell